

Dune bench - upholstered



Dune

Dune is designed by the German design duo, Hertel and Klarhoefer, with the objective of creating a bench that radiates elegance and lightness, but with a construction that is far more solid than it looks. This is achieved by Dune's solid wooden frame, where the elegant, curved shape of the seat and backrest and integrated seat cushions create beautiful synergy between the simple and functionalist elements, with clear references to Scandinavian design classics from the 1950s.

Hertel & Klarhoefer

Design

Fabric
Qual - Fabric

Colour
Stone Grey

Legs
Whitepigmented lacquered oak

Specification

Depth
63 cm

Back height
84 cm

Seat depth
42 cm

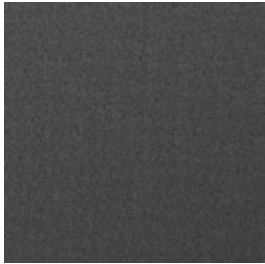
Width
160 cm

Seat height
47 cm

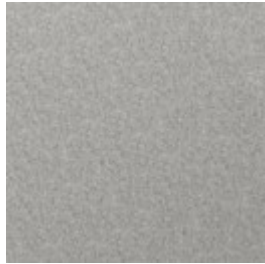
Material and colour

QUAL - WOOL

Qual is woven from 100% pure new wool – specially developed for Bolia. The soft structure makes it comfortable and user-friendly. The wool's natural content of lanolin makes the fabric easy to keep clean.



Grey Melange



Light Grey
Melange



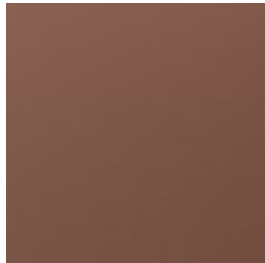
Stone Grey

QUATTRO TRACEABLE - LEATHER

Quality leather from European cattle. Quattro traceable leather is tanned without the use of chrome and can always be traced back to the cattle's area of origin. The leather is lightly surface treated and dyed, which ensures the appearance and colour of the leather.



Black



Cognac

Legs



Lacquered oak



Whitepigmented
lacquered oak

We are here to help