

# Palm upholstered dining chair



## Palm

Says Who are the designers behind Palm – a series of beautiful and comfortable dining chairs that elegantly balance comfort and design. Palm is available with or without armrests, upholstered or just in wood. All versions are created with an eye for the beautiful details that make the chair as functional as it is breathtaking. The slanted legs, together with the excellent craftsmanship, ensure that your Palm chair can carry both small and large experiences for an entire lifetime.



Says Who

### Design

**Fabric**

Hazel - Fabric

**Colour**

Dark Grey

**Legs**

Legs in white oiled oak

### Specification

**Chair height**

85 cm

**Seat height**

45,4 cm

**Chair depth**

55 cm

**Width**

42 cm

**Seat depth**

38,7 cm

# Material and colour

## QUAL - WOOL

Qual is woven from 100% pure new wool – specially developed for Bolia. The soft structure makes it comfortable and user-friendly. The wool's natural content of lanolin makes the fabric easy to keep clean.



Grey Melange



Light Grey Melange



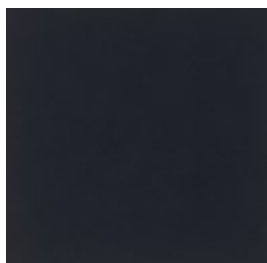
Sand



Stone Grey

## NOVEL - VELVET

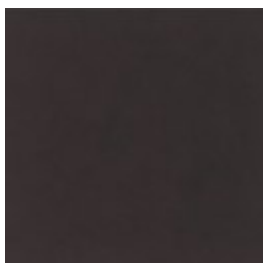
Novel is an elegant and soft velvet fabric with a luxurious '70s vibe. The soft fabric feels comfortable and brushes blissfully against your body. A sophisticated fabric that makes sure your furniture will get noticed.



Blue



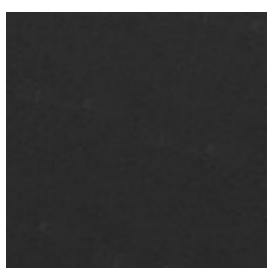
Green



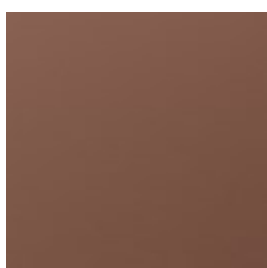
Grey Brown

## QUATTRO TRACEABLE - LEATHER

Quality leather from European cattle. Quattro traceable leather is tanned without the use of chrome and can always be traced back to the cattle's area of origin. The leather is lightly surface treated and dyed, which ensures the appearance and colour of the leather.



Black



Cognac

## Legs



Legs in black stained oak



Legs in oiled oak



Legs in oiled walnut



Legs in white oiled oak